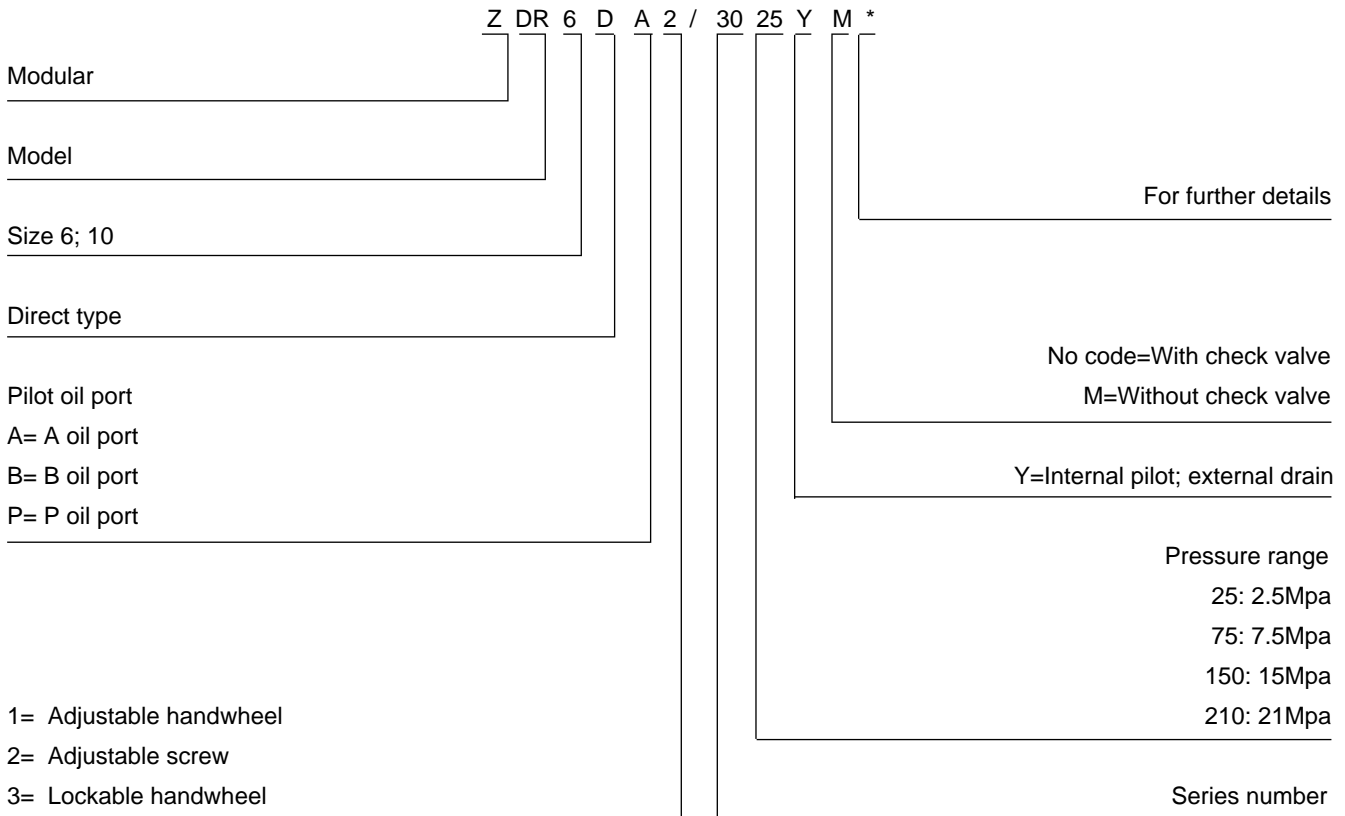
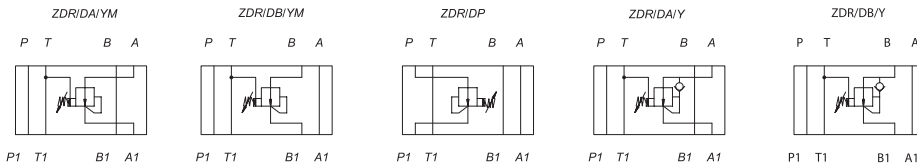
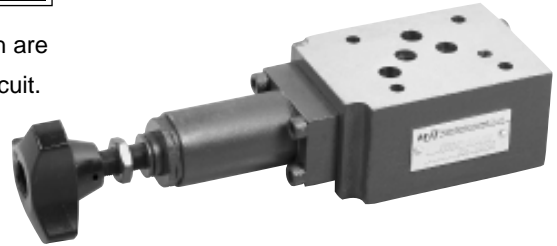


ZDR-D SERIES DIRECT REDUCING MODULAR VALVES

ZDR-D series are 3-way direct operated pressure reducing valves, which are used to reduce the pressure in a certain circuit lower than of the main circuit.



Technical data

Size	6	10
Operating pressure (MPa)	31.5	31.5
Second working pressure (MPa)	21	21
Back pressure (MPa)	6	6
Flow rate (L/min.)	30	60
Fluid temperature (°C)	-20~80	-20~80

Installation dimensions refer to page 5, 8.

▶ Operating pressure vs. flow curves

