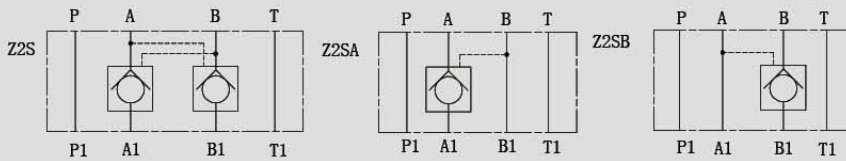


Z2S

Z2S SERIES PILOT CONTROLLED MODULAR CHECK VALVES



SYMBOL



Z2S series are pilot operated style sandwich valves. These valves used to close one or two actuator ports.

▶ Technical data

Size	6	10	16	22
Operating pressure (MPa)	31.5	31.5	31.5	31.5
Flow rate (L/min)	50	80	200	300
Fluid temperature range (°C)	-30 ~ 80°C	-30 ~ 80°C	-30 ~ 80°C	-30 ~ 80°C
Weight(KGS)	1	2.2	6.8	12.8
Valve body (Material) Surface treatment	casting phosphating surface			
Oil cleanliness	NAS1638 class 9 and ISO4406 class 20/18/15			

