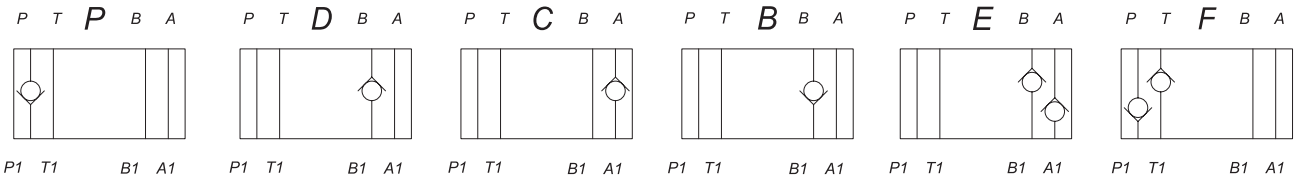
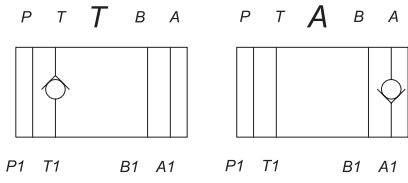


Z1S SERIES MODULAR CHECK VALVES

Z1S series are direct operated check valves.



Z1S 6 A 1 - 30 V *

Model _____

Size 6; 10 _____

See the symbol for flow type _____

1=Cracking pressure : 0.05MPa
 2=Cracking pressure : 0.3MPa
 3=Cracking pressure : 0.5MPa

For further details _____

No code=NBR seals for petroleum oils
 V=FPM seals for phosphate ester

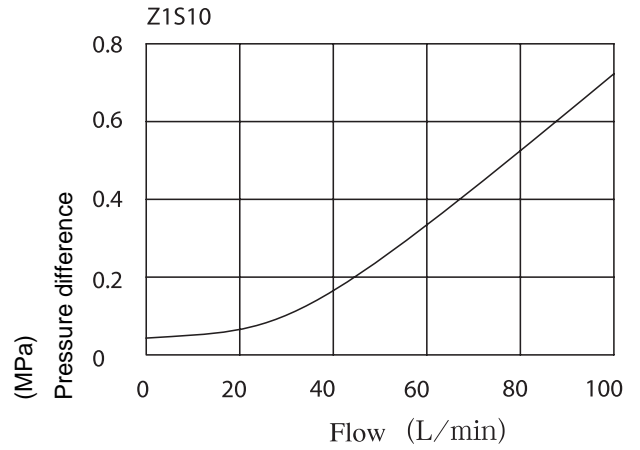
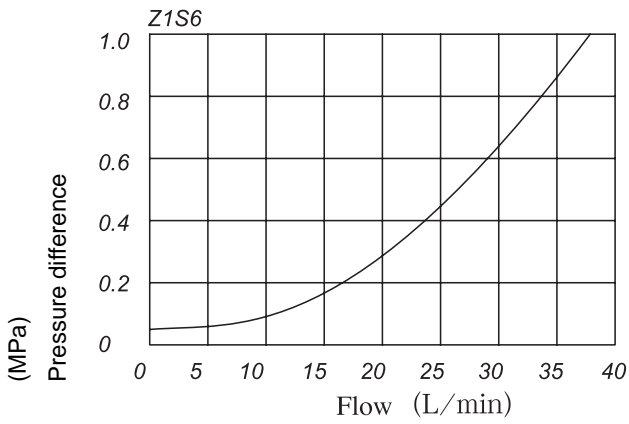
Series number _____

Technical data

Size	6	10
Operating pressure (MPa)	31.5	31.5
Flow rate (L/min)	40	100
Oil temperature range (°C)	-20~70	-20~70

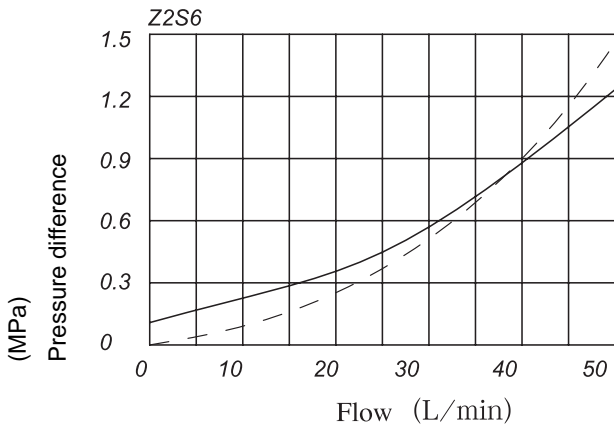
Installation dimensions refer to Z2S models.

▶ Operating curves

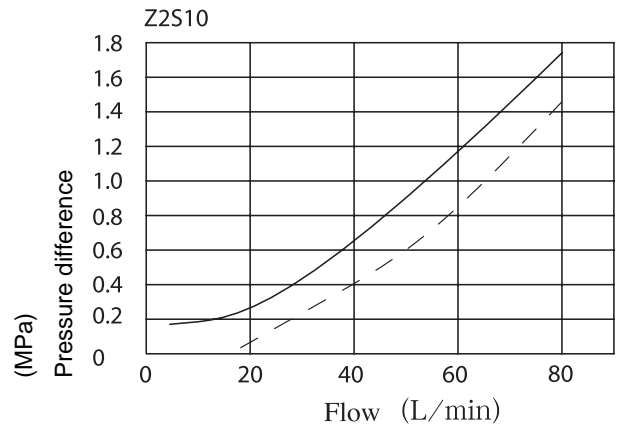


▶ Operating curves

— A→A1 B→B1
 - - A1→A B1→B



— A→A1 B→B1
 - - A1→A B1→B



▶ Operating curves

— A→A1 B→B1
 - - A1→A B1→B

