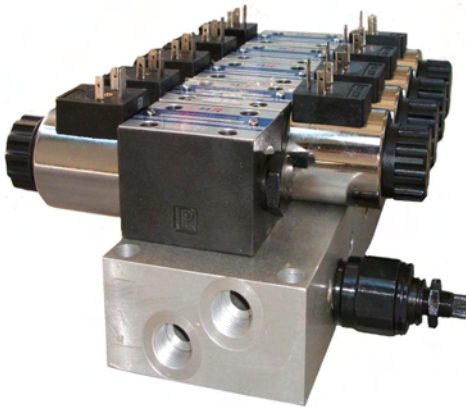


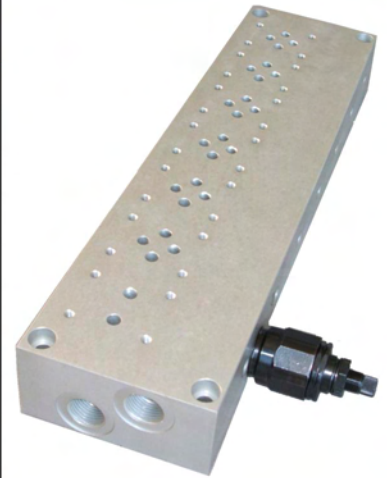
E.P.R. HYDRAULIC DIVISION: HS HYDRAULIC COMPONENTS

MANIFOLDS SIZE 6 COMPLETE OF RELIEF VALVE SERIES FML

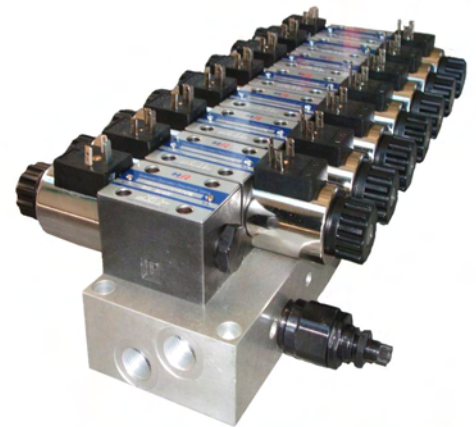
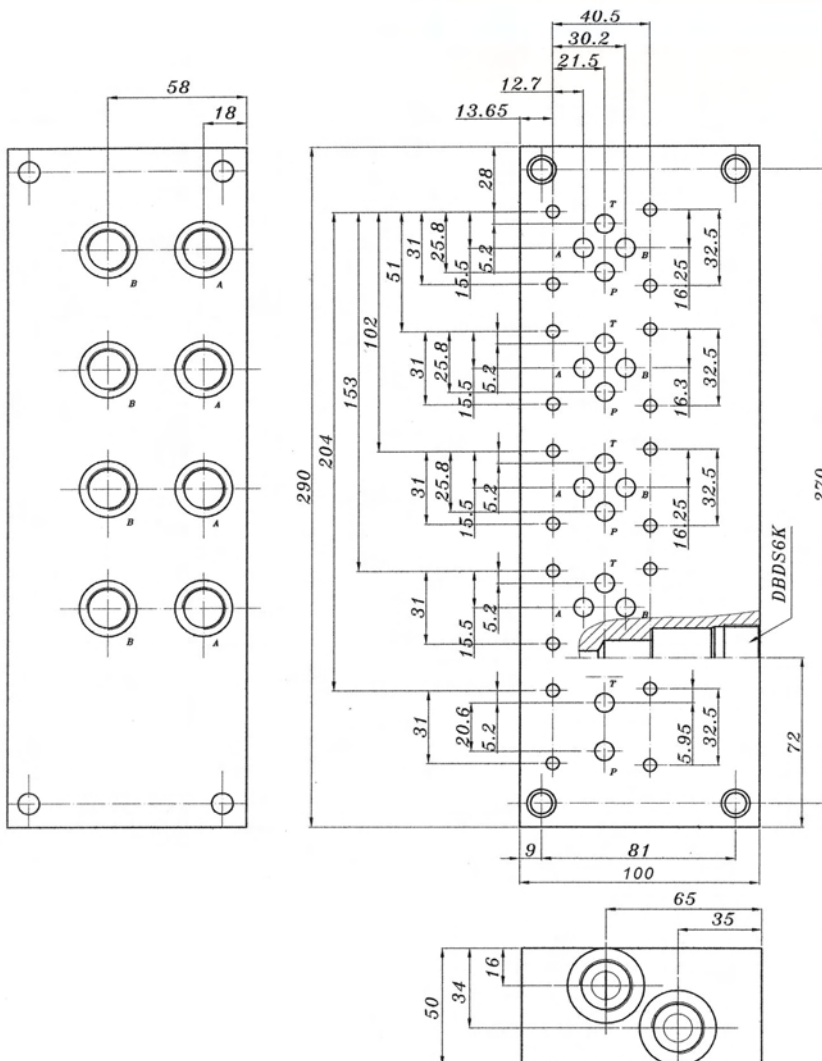


MATERIAL: ALUMINIUM

NO. OF POSITIONS	ORDER CODE
4+1	FML318
5+1	FML320
6+1	FML322
7+1	FML324
8+1	FML326
9+1	FML328
10+1	FML330
11+1	FML332
12+1	FML334



DIMENSIONS



THREADS

PORT	SIZE
A	3/8" BSP
B	3/8" BSP
P	1/2" BSP
T	1/2" BSP