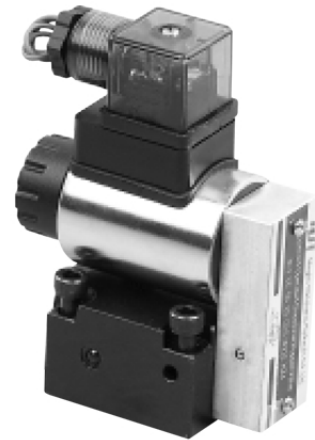
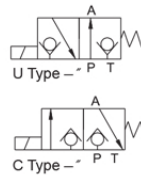


M-SE SERIES DIRECTIONAL BALL VALVES

M-SE series are solenoid operated poppet valves, they are used to control the start, stop and direction of flow.



M - 3	SE	6	U	20	315	G24	N	Z4	P	B0.8	
Mineral hydraulic oil		3=3 actuator ports		4=4 actuator ports		Model		Size 6;10		No code=Without throttle insert B0.8=Throttle 0.8mm B10=Throttle 1.0mm B12=Throttle 1.2mm B14=Throttle 1.4mm B15=Throttle 1.5mm B18=Throttle 1.8mm B20=Throttle 2.0mm B22=Throttle 2.2mm	
U=2/3 way normally open; C=2/3 way normally closed		D=2/4 way; Y=2/4 way		Series number		Operating pressure		No code=Without cartridge check valves P=With cartridge check valves		Z4=Quadrate plug; Z5=Large quadrate plug	
G24=DC 24V ; W220=AC 220V		No code=Without manual override		N=With manual override							

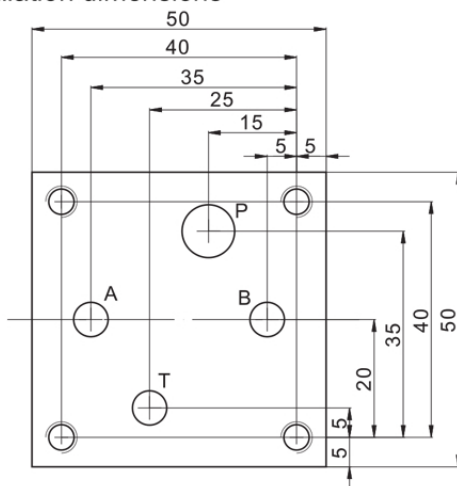
Technical data

Size	6U	6C	6D	6Y	10U	10C	10D	10Y
Rated flow (L/min.)	16	16	12	12	30	24	30	24
Rated pressure (MPa)	31.5							

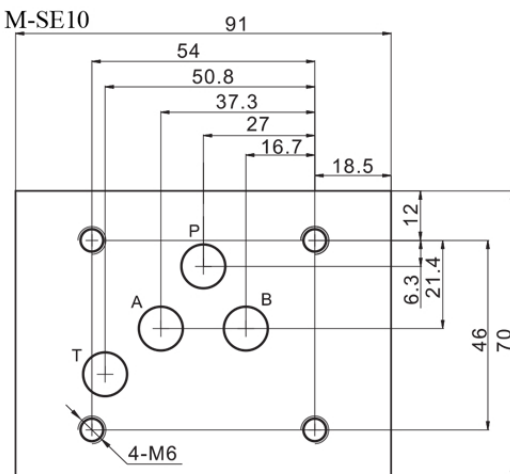


Installation dimensions

M-SE6

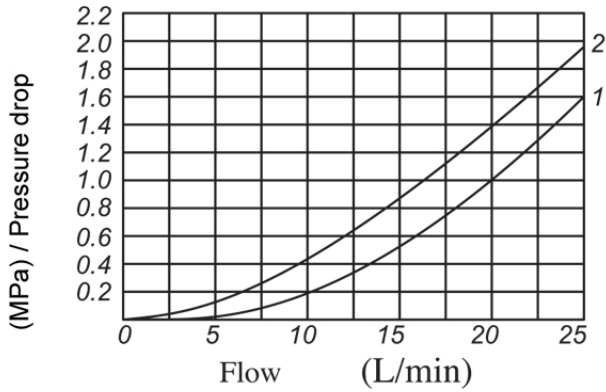


M-SE10



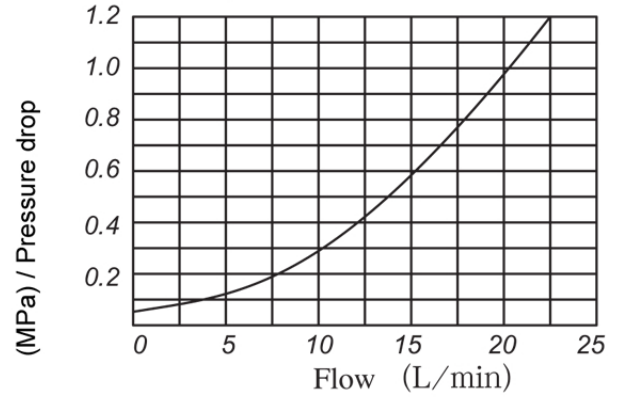
▶ Pressure drop vs. flow curves

2/2-way poppet valve



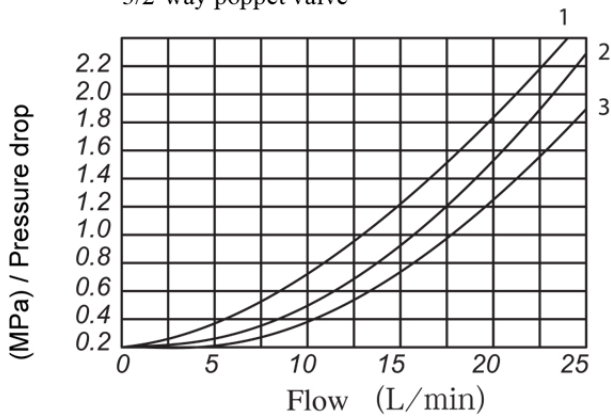
- 1. 2SE6N P-T
- 2. 2SE6P P-T

Cartridge check valve insert



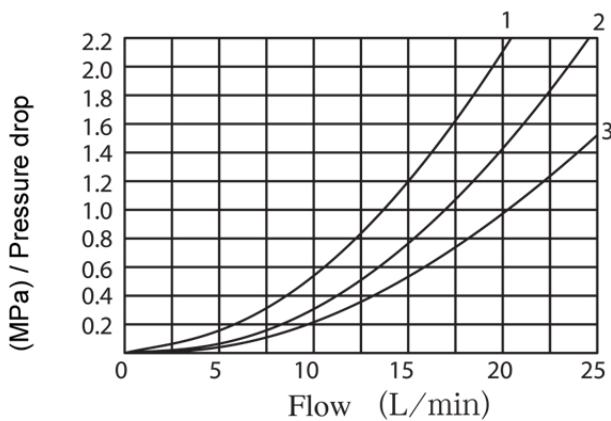
- 1. 3SE6 UC A-T
- 2. 3SE6U P-A
- 3. 3SE6C P-A

3/2-way poppet valve

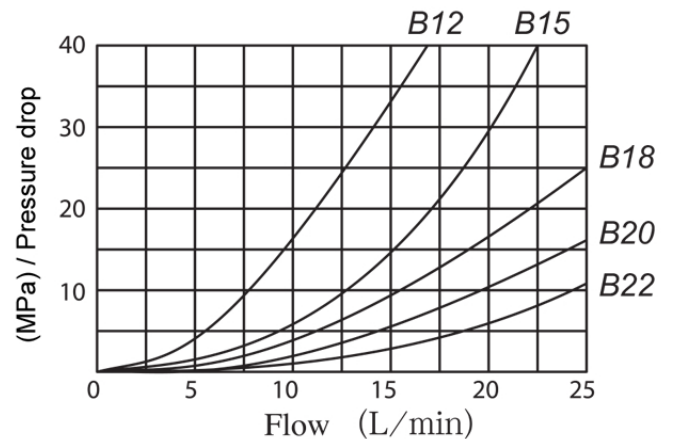


- 1. 4SE6 D/Y A-T
- 2. 4SE6 D/Y P-A
- 3. 4SE6 D/Y P-B, B-T

4/2-way poppet valve



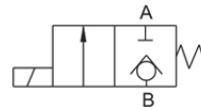
Orifice insert



QE SERIES SOLENOID OPERATED UNLOADING BALL VALVES

QE series solenoid operated unloading ball valve is used to control the opening and closing in pilot return lines.

It is often used for releasing the pressure in pressure-maintaining return lines



	M - 2	QE	6	B	20 / 315	G24 *	
Mineral hydraulic oil							For further details
U=2/2 way							G24=DC 24V ; W220=AC 220V
Model							Operating pressure 31.5MPa
Size							Series number
							Normally closed

Installation dimensions

