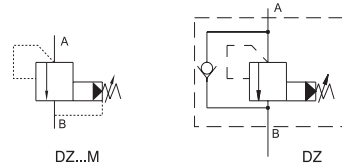
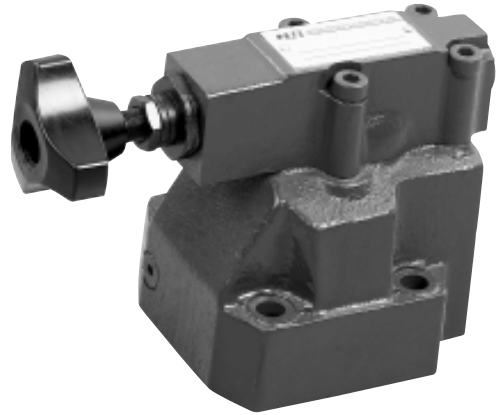


DZ30/5X PILOT-OPERATED SEQUENCE VALVES

DZ type pilot-operated sequence valve is used to control the sequencing, braking, unloading or other functions.

The valve has two connection types and four kinds of control methods of pilot oil, therefore, it has different functions by changing the control method of pilot oil. The 5X series DZ type valve has higher performance than 30 series, with smoothly adjustable performance, widely adjustable range, high flow rate.



Model

DZ C 10 - 1 - 30 / 210 / X M / 2 / V *

DZ...M

C=(Without size) Pilot valve

C=(With size) Pilot valve with cartridge

10=10; 25=20; 32= 30

1=Hand knob; 2=Screw adjustment with protective cap

30=30 Series; 50=5X Series

210=Max. adjustable pressure is 21MPa

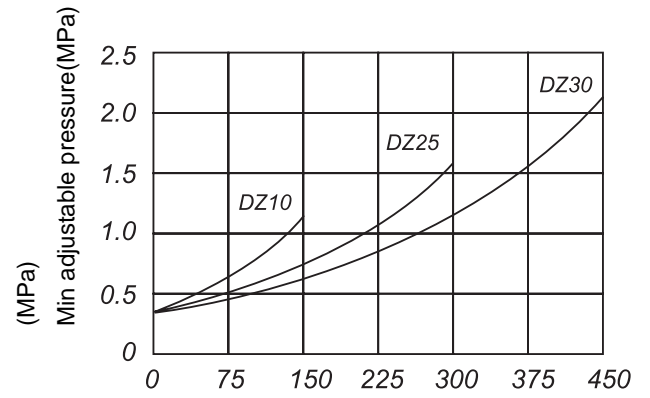
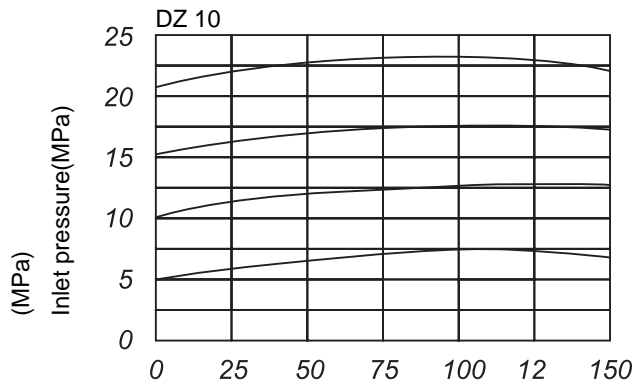
For further details

No code=NBR seals for petroleum oils
V=FPM seals for phosphate ester

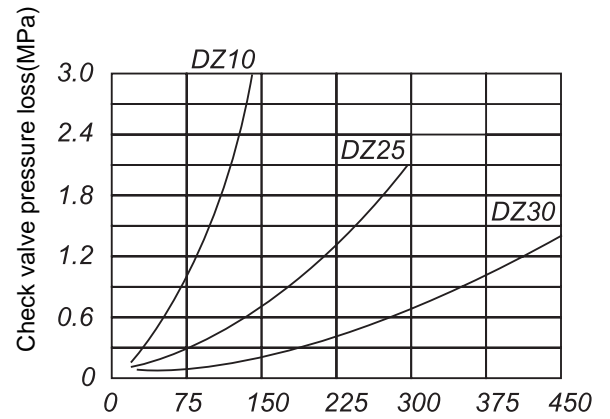
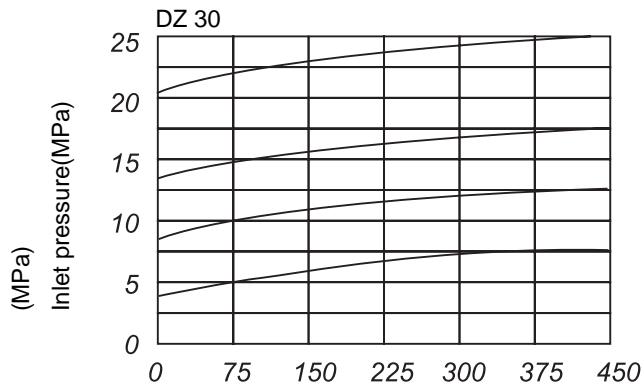
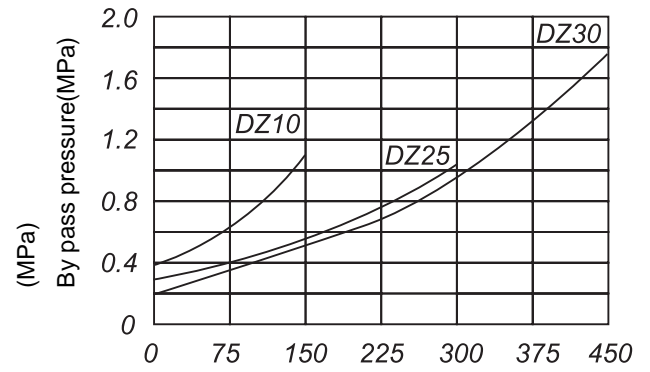
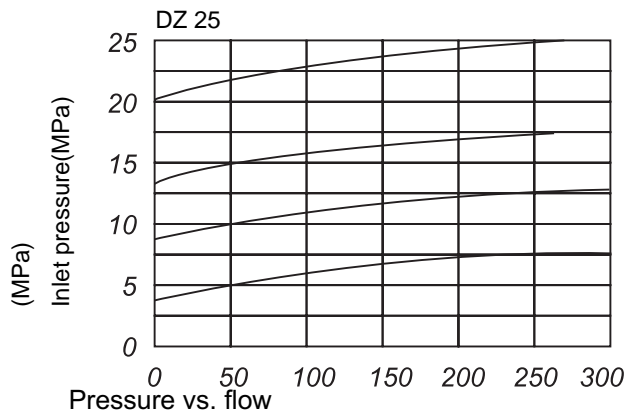
No code=Drain port with G 1/4"
2=Drain port with M14X1.5

No code=With check valve
M=Without check valve

No code= Internal pilot, internal drain
X=External pilot, internal drain
Y=Internal pilot, external drain
XY=External pilot, external drain



Pressure vs. flow

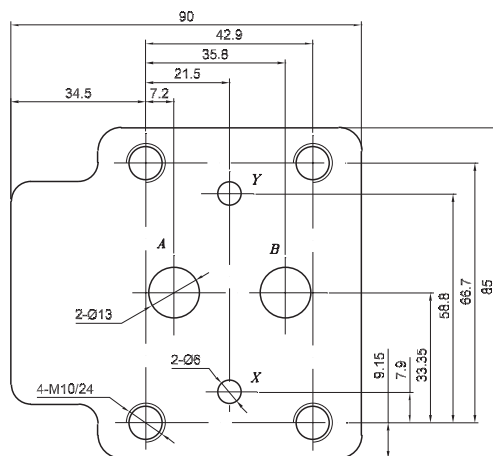


Charateristic

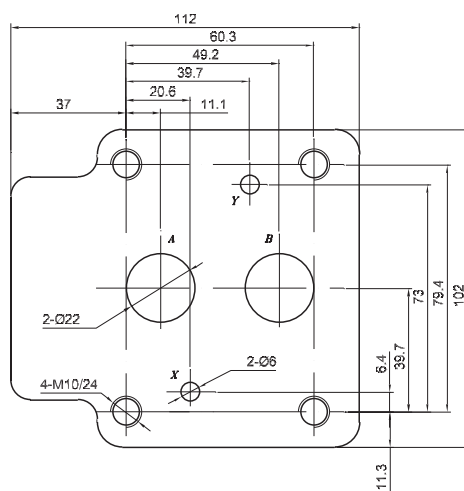
Size	10	20	32
Flow (L/min)	150	300	450
Operating pressure of A,B,X port(MPa)	31.5		
Back pressure of Y port (MPa)	31.5		
Adjustable switching pressure MPa	0.3-21		
Fluid temperature range	-20-70		

Installation dimensions

DZ10



DZ20



DZ30

