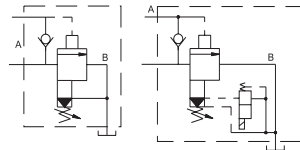
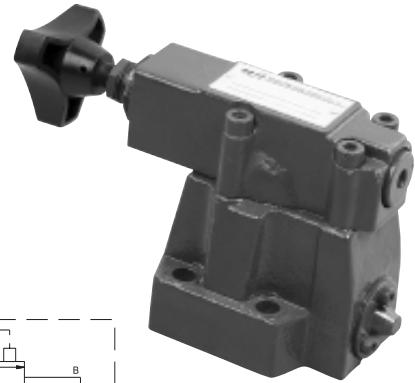


DA/DAW SERIES PILOT OPERATED UNLOADING VALVES

DA/DAW series are pilot operated pressure unloading valves. This series are used to unload the oil pumps' pressure in a hydraulic system with accumulator. The valve allows high-pressure pump to operate and low-pressure pump to unload pressure.



DA

DAW

DA W 10 A - 1 * 30 / 80 Y G24 N Z4 / V *

Model

For further details

No code=Without directional valve
W= With directional valve

No code=NBR seals for petroleum oils
V=FPM seals for phosphate ester

Size=10; 20; 30

Z5L=Quadrant plug with light

A=Normally closed; B=Normally open

No code=Without manual override
N=With manual override

1=Adjustable knob
2=Hexagonal nut and protective cap

W220=AC 220V; G24=DC 24V

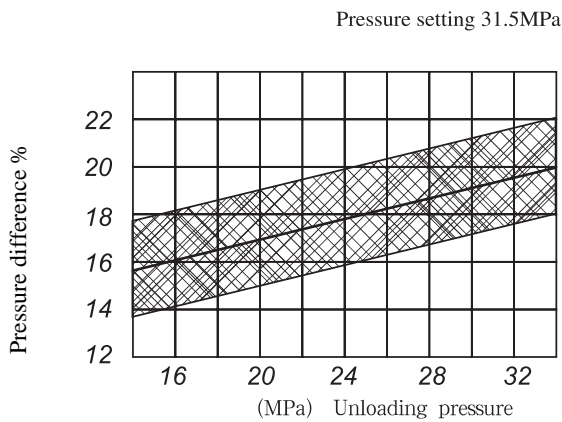
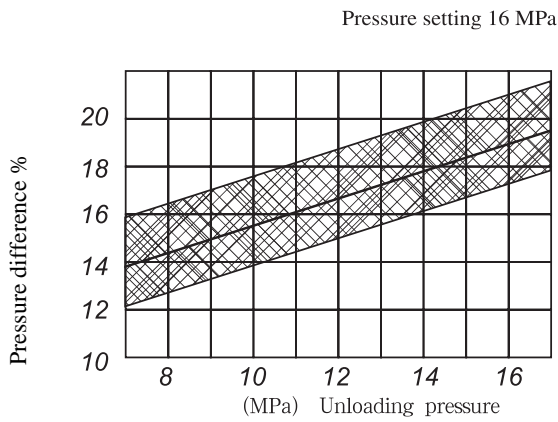
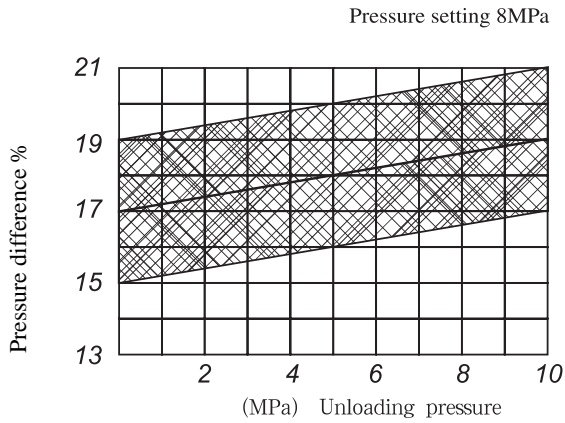
Series Number

80=2-8MPa; 160=8-16 MPa; 315=16-31.5 MPa

No code=Internally piloted, internally drained
Y=Internally piloted; externally drained

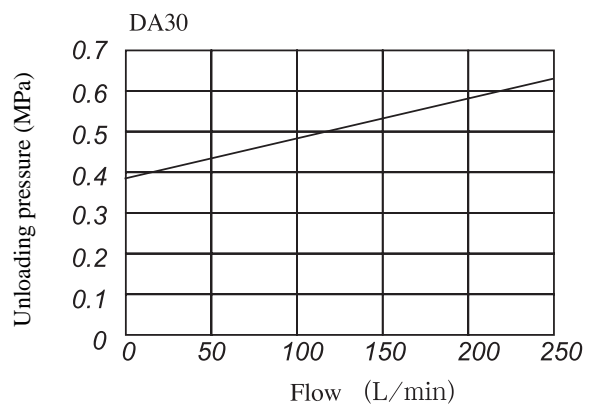
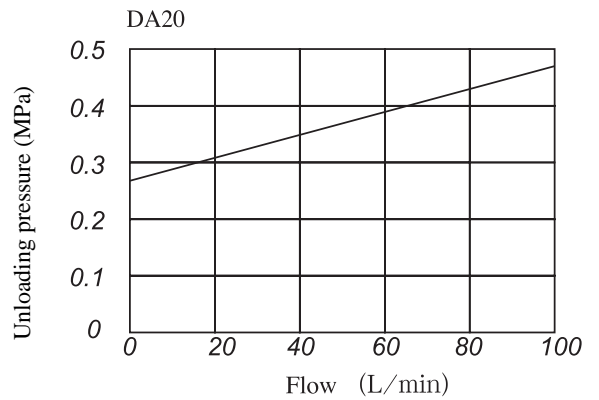
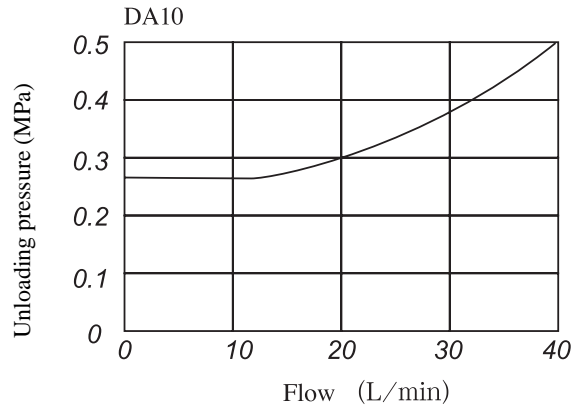


Pressure difference from P-T of a pump



(Control range in hatching area)

Unloading pressure from P-A of a pump

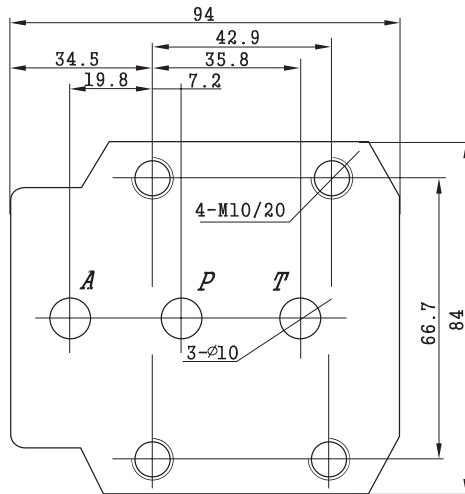


Technical data

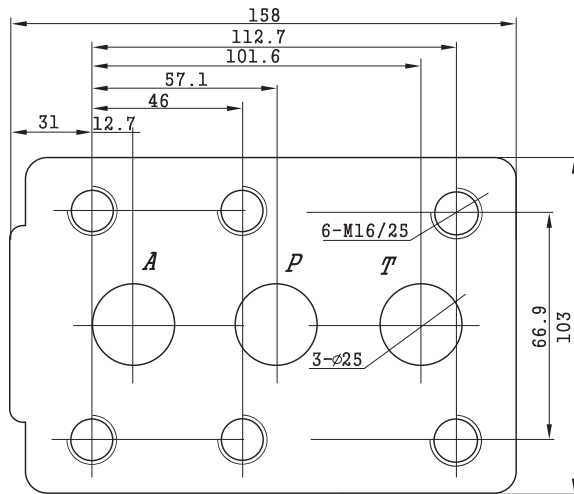
Size	10	20	30
Input pressure of A port (MPa)		31.5	
Max. Flow	40	100	250
Fluid temperature (°C)		-20~70	
Filtration		25	

▶ Installation dimensions

DA10



DA20



DA30

