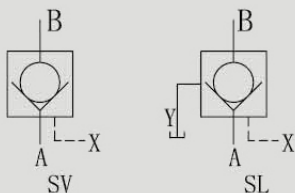


SV/SL PILOT OPERATED CHECK VALVES

SYMBOL



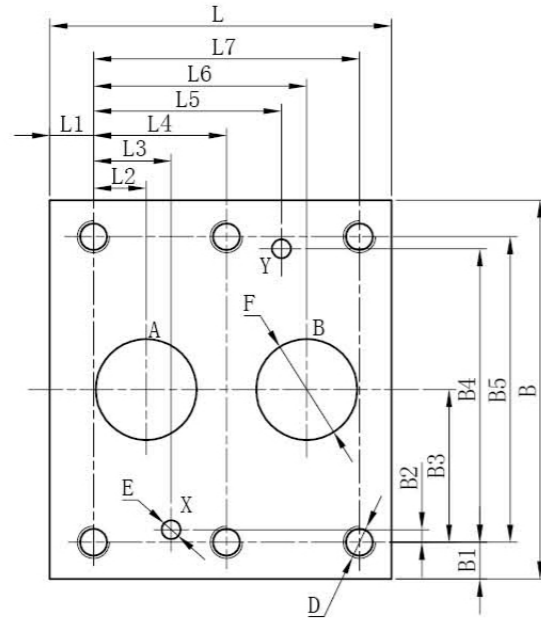
SV/SL pilot operated check valves allow free flow in one direction and block flow in the counter direction to maintain pressure. The oil is allowed to flow in the counter direction when the X port is connected.

SV is designed for internally drained. SL is designed for externally drained.

▶ Technical data

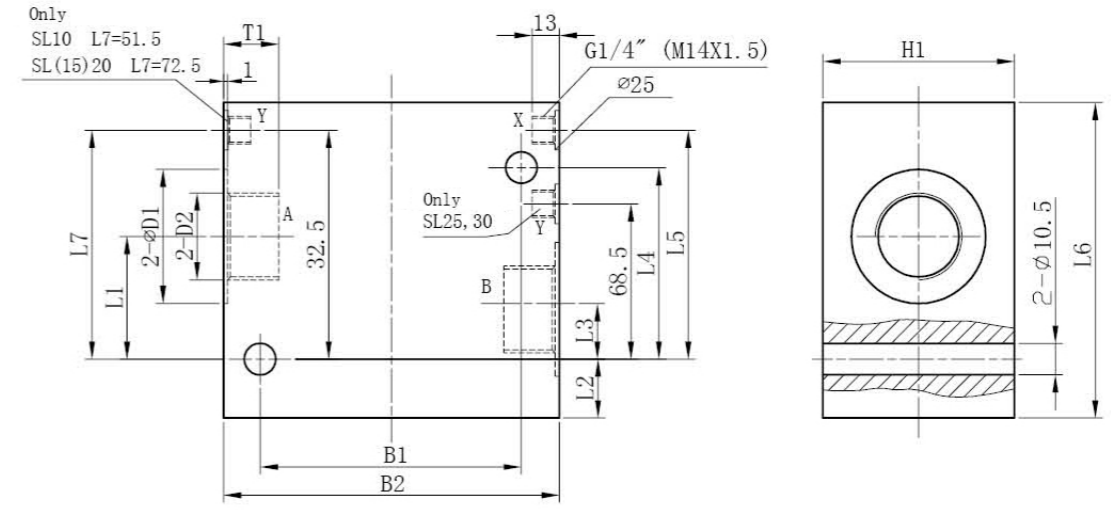
| | | | | | | |
|-------------------------------------------|-------------------------------------------------|------|------|------|------|------|
| Size | SV10 | SL10 | SV20 | SL20 | SV30 | SL30 |
| Port X pilot volume(cm ³) | 2.2 | | 8.7 | | 17.5 | |
| Port Y volume(cm ³) | — | 1.9 | — | 7.7 | — | 15.8 |
| Direction of flow | Free flow from A to B; B to A when Piloted open | | | | | |
| Operating pressure(Mpa) | 31.5 | | | | | |
| Pilot control pressure range(MPa) | 0.5–31.5 | | | | | |
| Max .flow rate(L/min) | 80 | | 150 | | 300 | |
| Weight(KGS) | 2.5 | 2.3 | 4.3 | 4.6 | 8.5 | 9.2 |
| Valve body (Material) Surface treatment | Steel Body Surface Black Oxide | | | | | |
| Oil cleanliness | NAS1638 class 9 and ISO4406 class 20/18/15 | | | | | |

Subplate mounting dimensions



| size | L | L1 | L2 | L3 | L4 | L5 | L6 | L7 | B | B1 | B2 | B3 | B4 | B5 | D | E | F |
|------|-----|------|------|------|------|------|------|------|-----|------|-----|-------|------|------|----------|------|-------|
| 10 | 80 | 18.5 | 7.2 | 21.5 | — | 21.5 | 35.8 | 42.9 | 85 | 9.15 | 7.9 | 33.35 | 58.8 | 66.7 | 4-M10/24 | 2-Φ6 | 2-Φ13 |
| 20 | 95 | 17.5 | 11.1 | 20.6 | — | 39.7 | 49.2 | 60.3 | 102 | 11.3 | 6.4 | 39.7 | 73 | 79.4 | 4-M10/24 | 2-Φ6 | 2-Φ25 |
| 30 | 115 | 15.5 | 16.7 | 24.5 | 42.1 | 59.5 | 67.5 | 84.2 | 120 | 11.6 | 3.8 | 48.4 | 92.8 | 96.8 | 6-M10/24 | 2-Φ6 | 2-Φ32 |

Threaded connection dimensions



| Model | size | B1 | B2 | D1 | D2 | T1 | H1 | L1 | L2 | L3 | L4 | L5 | L6 |
|-------|------|------|-----|----|----------------|----|----|------|------|------|------|------|-----|
| SV | 10 | 66.5 | 85 | 34 | G 1/2" M22X1.5 | 14 | 42 | 27.5 | 18.5 | 10.5 | 33.5 | 49 | 80 |
| | 15 | 79.5 | 100 | 42 | G 3/4" M27X2 | 16 | 57 | 36.7 | 17.3 | 13.3 | 50.5 | 67.5 | 95 |
| | 20 | 79.5 | 100 | 47 | G1" M33X2 | 18 | 57 | 36.7 | 17.3 | 13.3 | 50.5 | 67.5 | 95 |
| | 25 | 97 | 120 | 56 | G 1 1/4" M42X2 | 20 | 75 | 54.5 | 15.5 | 20.5 | 73.5 | 89.5 | 115 |
| | 30 | 97 | 120 | 61 | G 1 1/2" M48X2 | 22 | 75 | 54.5 | 15.5 | 20.5 | 73.5 | 89.5 | 115 |
| SL | 10 | 66.5 | 85 | 34 | G 1/2" M22X1.5 | 14 | 42 | 22.5 | 18.5 | 10.5 | 33.5 | 49 | 80 |
| | 15 | 79.5 | 100 | 42 | G 3/4" M27X2 | 16 | 57 | 30.5 | 17.5 | 13 | 50.5 | 72.5 | 100 |
| | 20 | 79.5 | 100 | 47 | G1" M33X2 | 18 | 57 | 30.5 | 17.5 | 13 | 50.5 | 72.5 | 100 |
| | 25 | 97 | 120 | 56 | G 1 1/4" M42X2 | 20 | 75 | 54.5 | 15.5 | 20.5 | 84 | 99.5 | 125 |
| | 30 | 97 | 120 | 61 | G 1 1/2" M48X2 | 22 | 75 | 54.5 | 15.5 | 20.5 | 84 | 99.5 | 125 |



V=Internally drained(without drain port)
L=Externally drained(with drain port)

Size: 10/15/20/25/30

P=Subplate mounting(Only for size10,20,30)
G=Threaded connection

A=Pilot type; B=Direct type

For further details

No code=NBR seals for petroleum oils
V=FPM seals for phosphate ester

No code=Inch thread;2=Metric

Series number

Cracking pressure 1=0.3MPa; 2=0.5MPa; 3=0.8MPa