

SERIE XC

XC SERIES

SERIE XC-F e XF-F

XC-F and XF-F SERIES

Per la serie XC la tabella si riferisce a taglie già realizzate. Consultateci per esigenze particolari.

About XC series the table below is referring to already produced sizes. Consult us for special requirements.

Il concetto di "abito su misura" raggiunge la sua massima espressione con le serie XC-F e XF-F per applicazioni pesanti. Alle già eccellenti performance delle fusioni della serie XC e dei forgiati della serie XF abbiamo elevato la soglia qualitativa ad un nuovo livello con le serie **XC-F e XF-F**.

I componenti di queste serie sono ottenuti tramite **FUCINATURA** con i più avanzati sistemi di produzione. La materia prima arriva già definita nella sua forma presso la EPR per essere lavorata con macchine CNC. Il risultato finale è un perfetto connubio tra design e forza.

Le serie **XC-F e XF-F** assieme alle nuove crociere studiate appositamente porta ad un livello superiore e senza pari per capacità di coppia trasmissibile. Siamo a vostra disposizione per studiare trasmissioni idonee alle vostre necessità più esigenti.

The concept of "dress on measure" reaches its maximum expression with the XC-F and XF-F series for heavy duty applications. To the already excellent performance of XC series casted parts and of XF forged parts we have elevated the quality threshold to a new level with the XC-F and XF-F series.

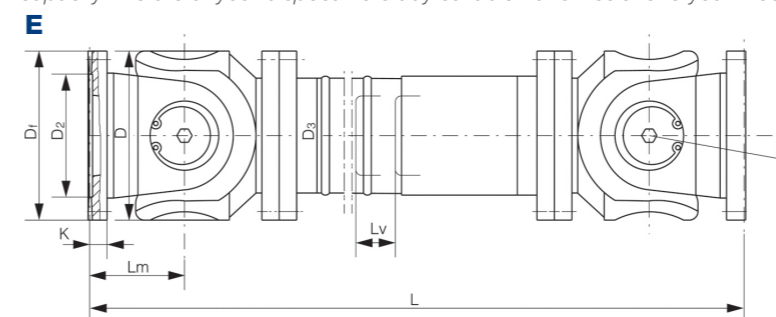
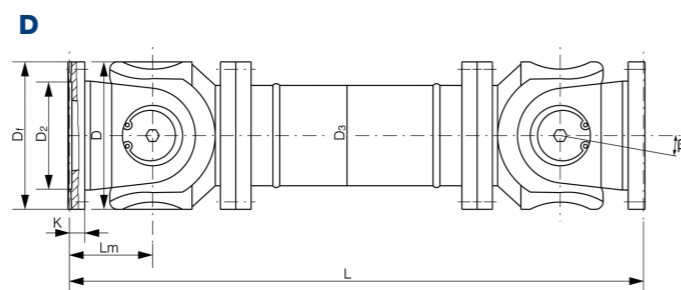
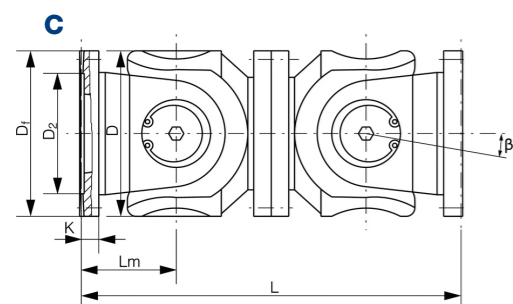
The components of this series are produced by FORGING with the most advanced production systems. The raw material arrives already defined in its shape at the EPR to be machined with CNC machines. The final result is a perfect combination of design and strength.

The XC-F and XF-F series together with the new u-joints designed specifically leads to a higher level and without equal for the transmittable torque capacity. We are at your disposal to study suitable transmissions to your most demanding requirements. -

VALORI DI COPPIA TRASMISSIBILE - TRANSMISSIBLE TORQUE VALUES

	XC 650	XC 700	XC 750	XC 780	XC 800	XC 840	XC 900	XC 960	XC 1000	XC 1060	XC 1100	XC 1200
Tn (KNm)	1640	3000	3640	2500	4420	3100	3800	4600	6900	6500	9200	12000
Tf (KNm)	980	1430	1750	1500	2120	1860	2280	2760	4140	3900	5500	7200

TIPO - TYPE



DIMENSIONI PRINCIPALI - MAIN DIMENSIONS

TIPO/TYPE	XC650	XC700	XC750	XC780	XC800	XC840	XC900	XC920	XC1000	XC1060	XC1100	XC1200
C	L	1540	1600	1840	1920	1920	2120	2280	2380	2480	2500	2720
	m [Kg]	3150	3450	4300	4680	5050	6400	8420	8950	10600	12100	16900
D	L	1940	2100	2400	2500	2500	2680	2950	2950	3130	3200	3570
	m [Kg]	3220	3530	4500	5400	5800	7470	9980	10500	12300	14500	19500
E	L	3230	3460	3620	4000	4000	4250	4580	4580	4770	4950	5660
	Lv	200	200	200	200	200	200	300	300	300	300	300
	m [Kg]	4880	5400	8000	8450	9070	11800	15900	16500	19900	22000	34800

DATI TECNICI - TECHNICAL DATA

DIM./SIZE	XC650	XC700	XC750	XC780	XC800	XC840	XC900	XC920	XC1000	XC1060	XC1100	XC1200			
Df	650	700	750	780	800	840	900	920	1000	1060	1100	1200			
D	650	700	750	780	800	840	900	920	1000	1060	1100	1200			
βmax [°]	5-10-15														
Lm	385	400	460	480	480	530	570	570	595	620	625	680			
K	70			95			110			120			130		
D3	560	580	620	660			750			790	800	850	900		
D1 [±0.1]	635	655	695	710	740	770	825	850	915	970	1015	1100			
D2	520	570	610	630	650	680	710	740	800	840	880	960			



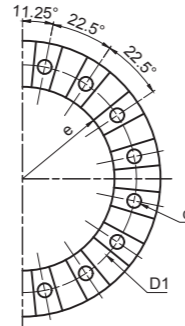
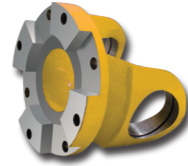
XC650F

SERIE XC e XC-F
XC and XC-F SERIES
11.1 FLANGE
FLANGES

Tipo
Type

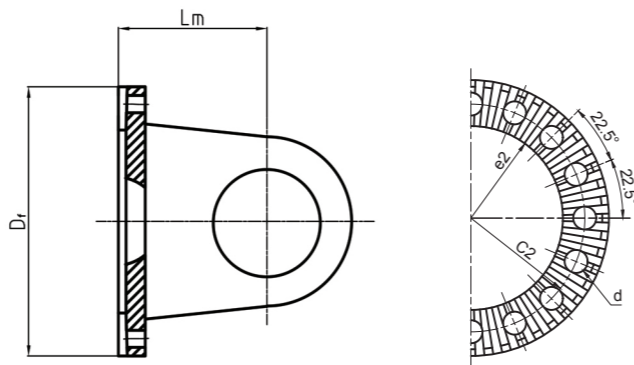
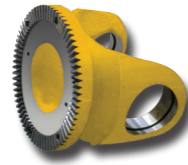
Descrizione
Description

Flangia con Connessione a Blocchi
Integral Face Pad Connection

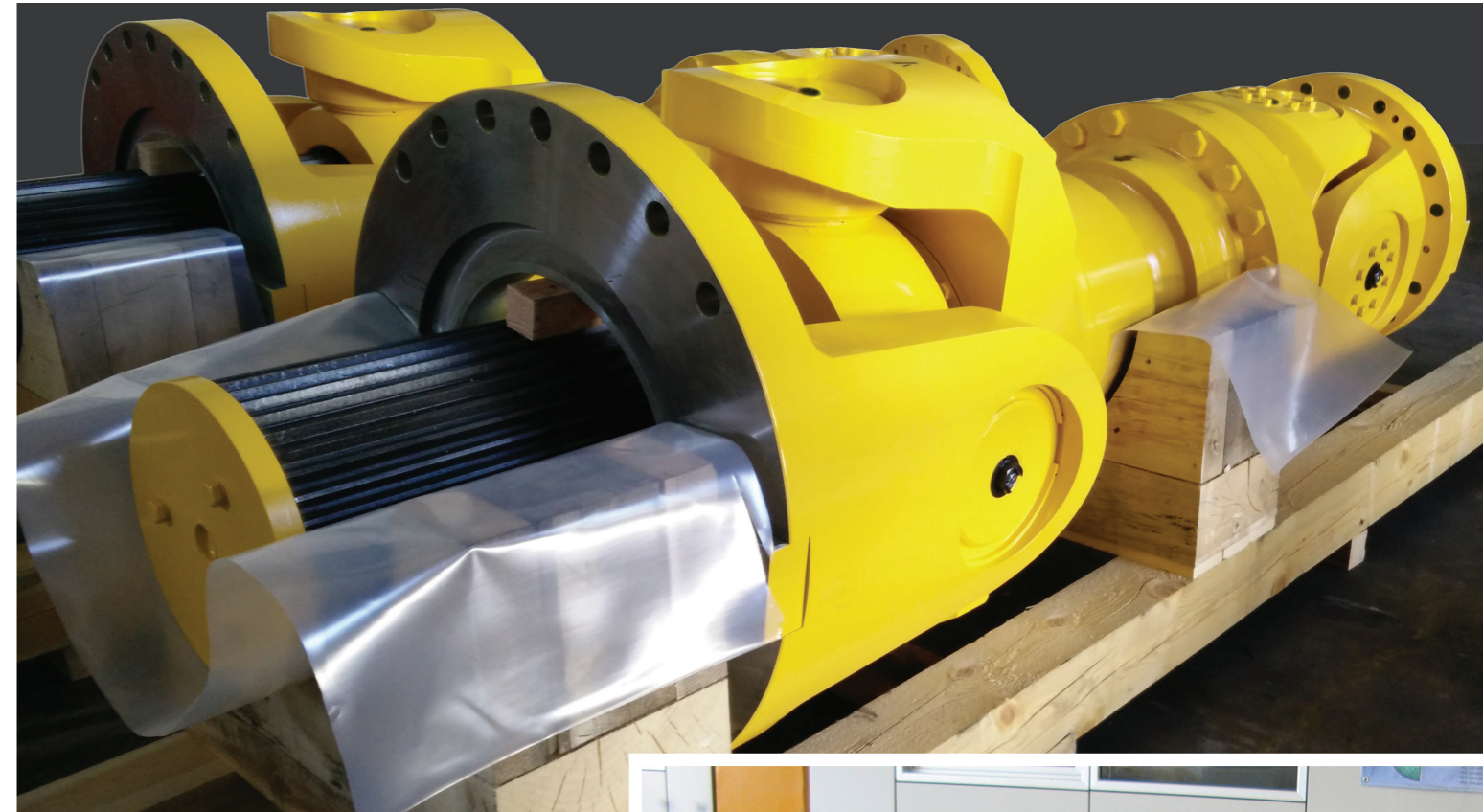


IPC

Flangia con Connessione Hirth
Hirth Serration Connection



HSC



XC650EA900F



XC900F

CARATTERISTICHE FLANGE - FLANGES SPECIFICATIONS

TYPE	SIZE		IPC				HSC					
	Df	e	D1 [±0.1]	z	n	d	C2 [±0.1]	e2	d [C12]	z	n	d
XC650	650	520	595	30	30	28	595	520	28	120	30	30
XC700	700	570	645	34	34	28	645	570	28	120	30	30
XC750	750	610	695	30	30	31	695	610	31	144	32	32
XC780	780	630	710	32	32	31	710	630	31	144	32	32
XC800	800	650	740	34	34	31	740	650	31	144	32	32
XC840	840	680	770	30	30	37	770	680	31	144	36	36
XC900	900	710	825	32	32	37	825	710	37	144	32	32
XC920	920	740	850	34	34	37	850	740	37	144	30	32
XC1000	1000	800	915	32	32	43	915	800	43	180	30	30
XC1060	1060	840	970	34	34	43	970	840	43	180	30	30
XC1100	1100	880	1015	32	32	43	1015	880	43	180	30	30
XC1200	1200	960	1100	32	32	49	1100	960	49	180	30	30

z= numero denti - n= numero fori
z= number of teeth - n= number of holes

