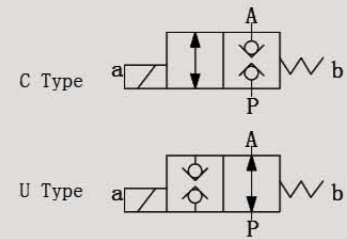


# M-2SED

## M-2SED SERIES DIRECTIONAL BALL VALVES



### SYMBOL



M-2SED series direction valves are solenoid directional loose valves, these valves are used to control the oil flow, stop and direct.

### Technical data

Size	M-2SED
Operating pressure(Mpa)	20
Flow rate(L/min)	20
Valve body ( Material ) Surface treatment	casting phosphating surface
Oil cleanliness	NAS1638 class 9 and ISO4406 class 20/18/15

### Subplate Installation dimensions

