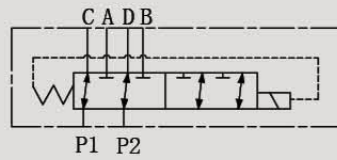


# KVH6

## KVH6 FLOW DIVERTERS



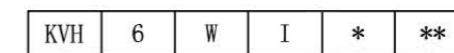
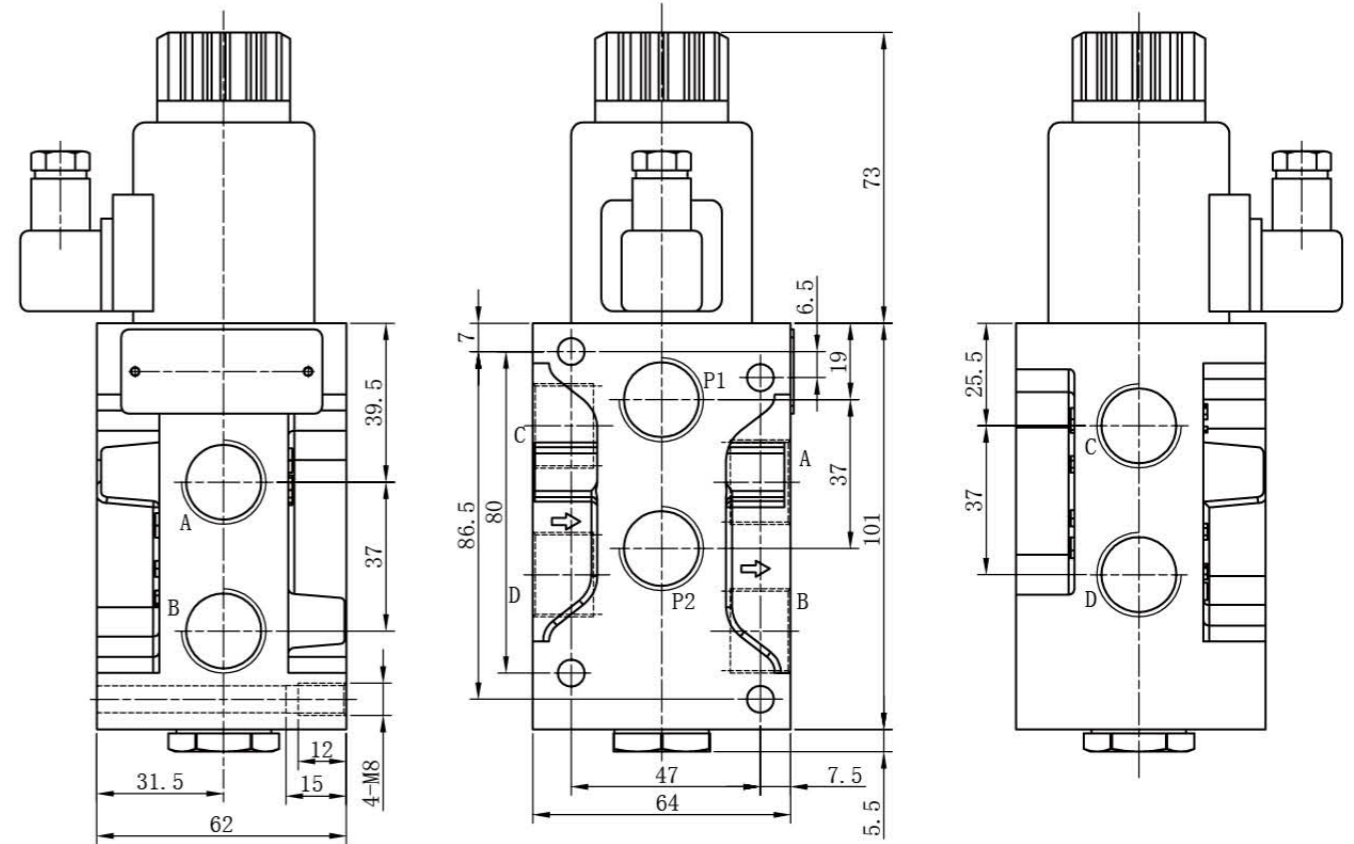
### SYMBOL



### Technical data

Model	KVH6
Max Flow rate ( L/min )	50
Max operating pressure ( MPa )	25
Valve body ( Material ) Surface treatment	( casting ) phosphating surface
Oil cleanliness	NAS1638 class 9 and ISO4406 class 20/18/15

### Installation Dimensions



Model

Size 06

Threaded connectors 1/2" BSP

Internal drainage

Variants  
 00=No variant  
 (connectors as in the drawing)  
 V1=Viton R1=recitifier  
 E1=Emergency button

DC12=DC12V DC24=DC24V W=Without DC coils