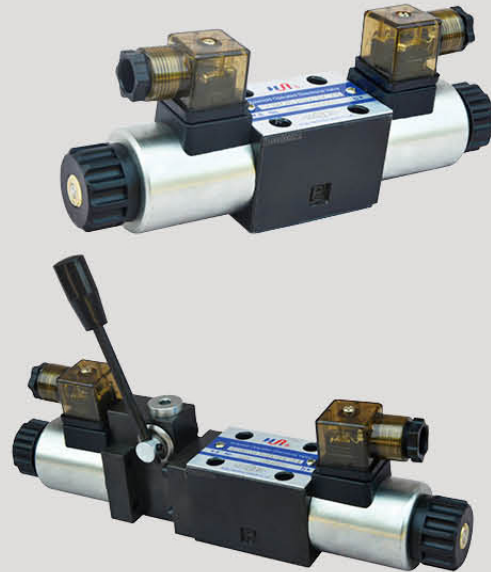
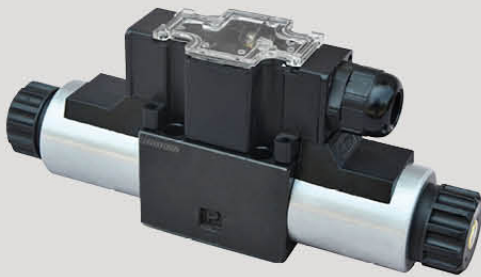


DWG6

DWG6 SERIES SOLENOID OPERATED DIRECTIONAL CONTROL VALVES

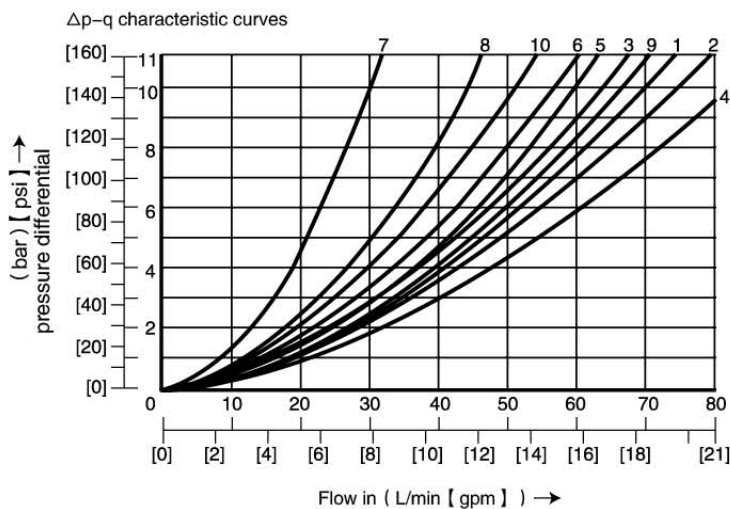


DWG6 series directional control valves are solenoid operated directional spool valves, these valves are used to the start, stop and direct flow.

Technical data

Size		6
Max. flow rate (L/min)		60
Operating pressure (MPa)		A, B, P oil port 31.5 T oil port 16
Weight (KGS)	Without Handle	1.6/2.2
	With Handle	2.2/2.8
Valve body (Material) Surface treatment		casting phosphating surface

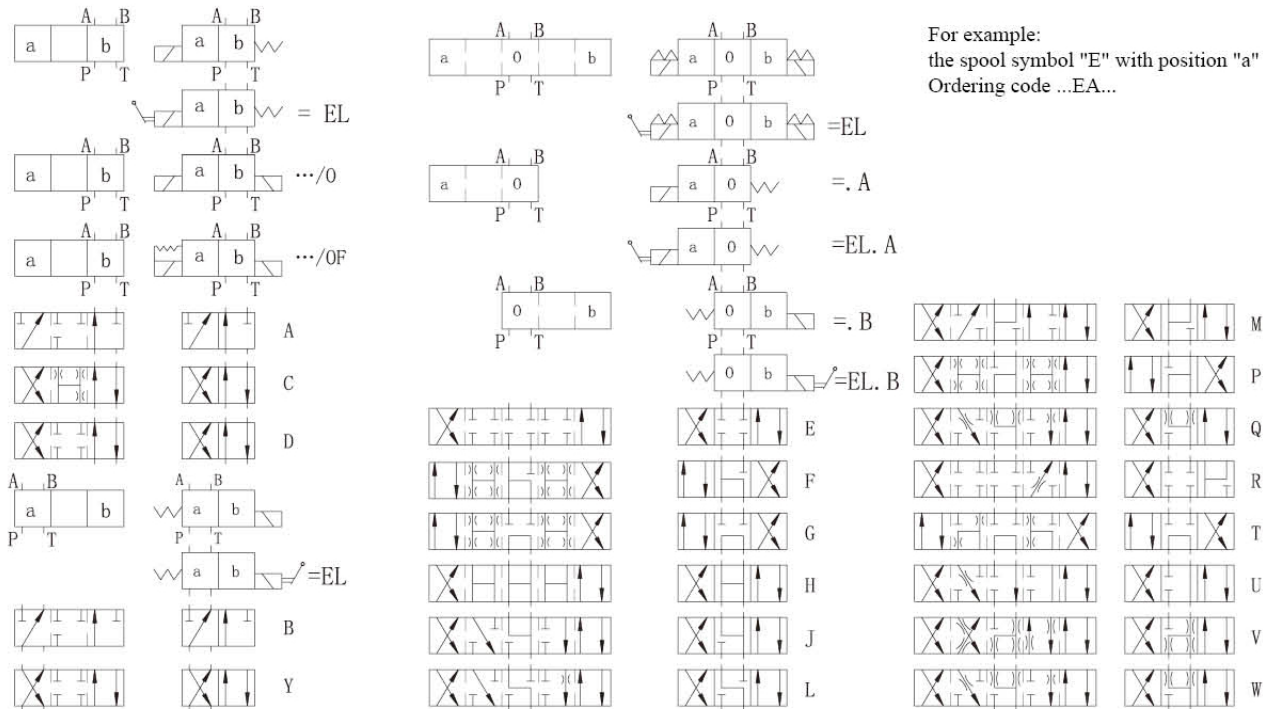
Characteristic curves (measured with HLP46, $V_{oil}=40^{\circ}\text{C} \pm 5^{\circ}\text{C}$ [104°F ± 9°F])



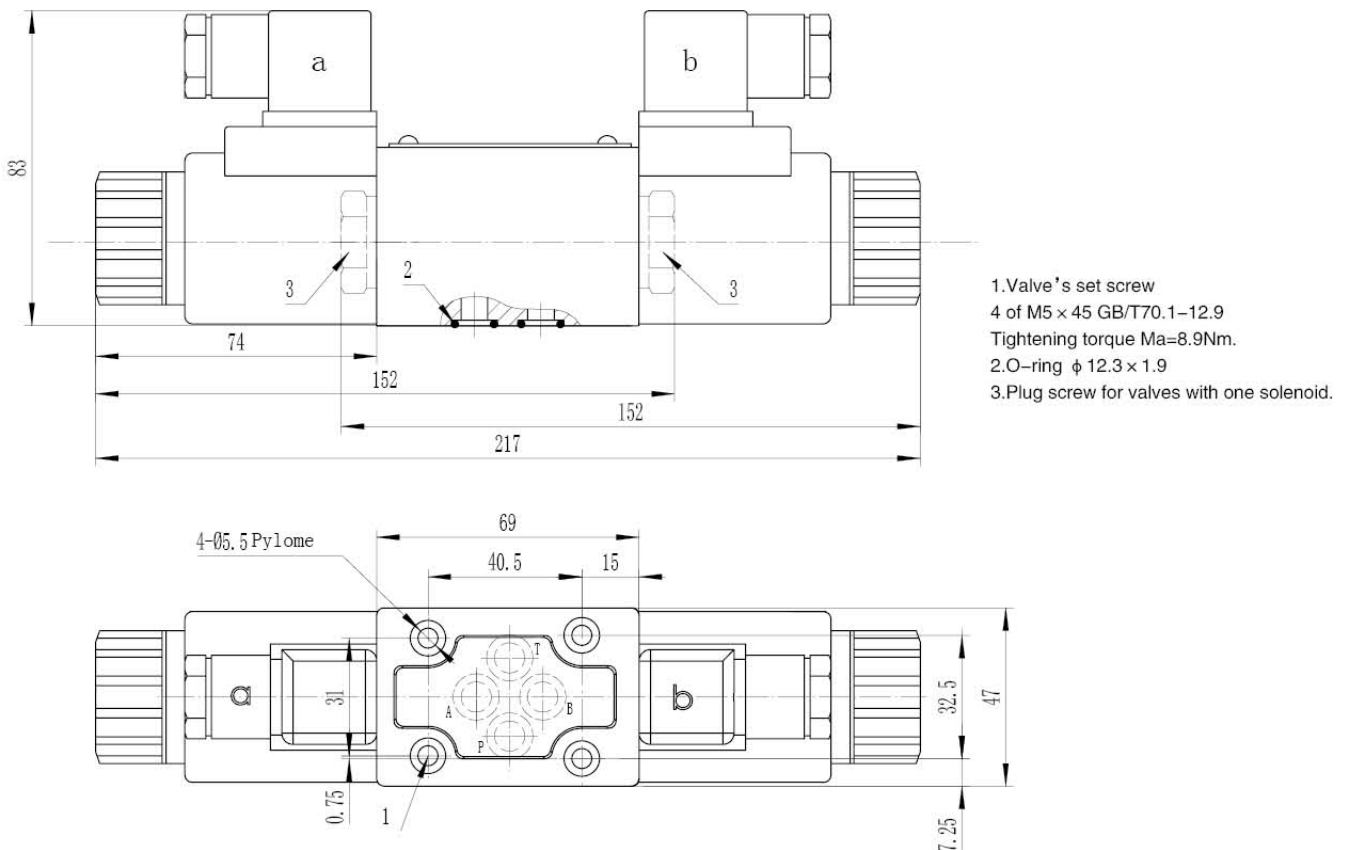
Spool symbol	Flow direction			
	P-A	P-B	A-T	B-T
A; B	3	3	-	-
C	1	1	3	1
D; Y	5	5	3	3
E	3	3	1	1
F	1	3	1	1
T	10	10	9	9
H	2	4	2	2
J; Q	1	1	2	1
L	3	3	4	9
M	2	4	3	3
P	3	1	1	1
R	5	5	4	-
V	1	2	1	1
W	1	1	2	2
U	3	3	9	4
G	6	6	9	9

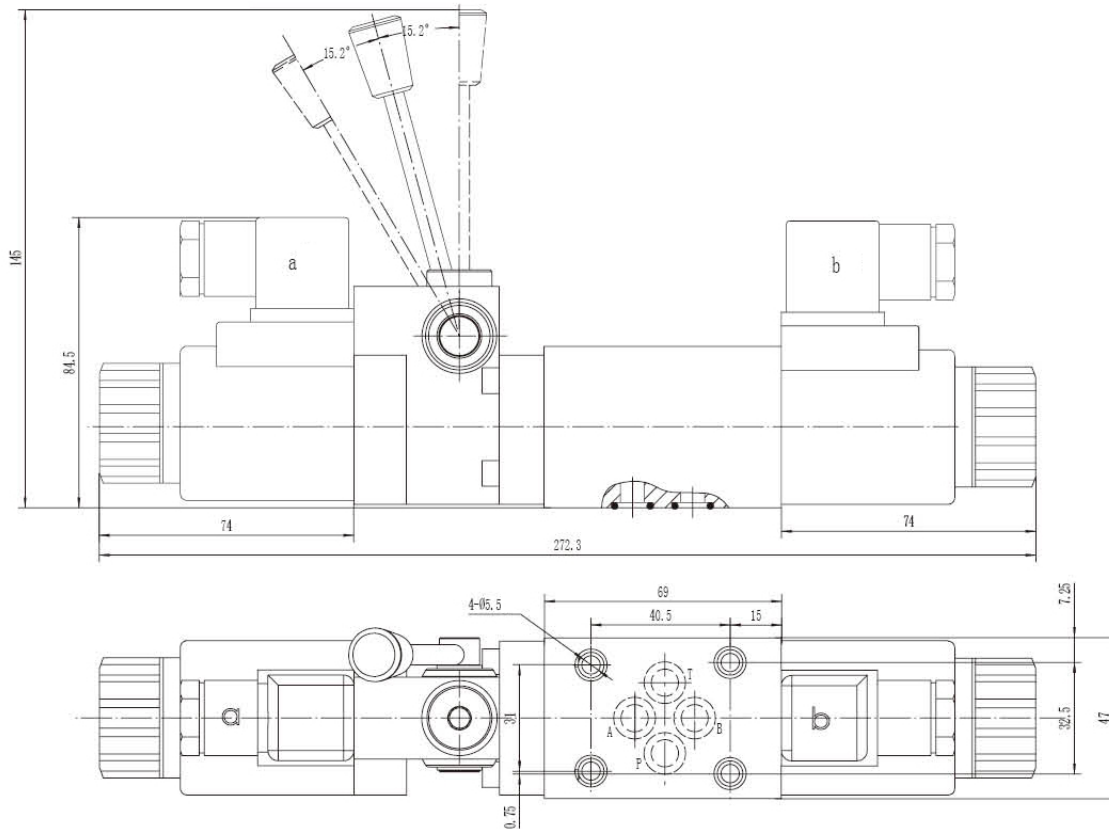
- 7 Spool symbol "R" in spool position B→A
- 8 Spool symbol "G" and "T" in central position
- 9 Spool symbol "H" and "T" in central position P→T

Spool symbols

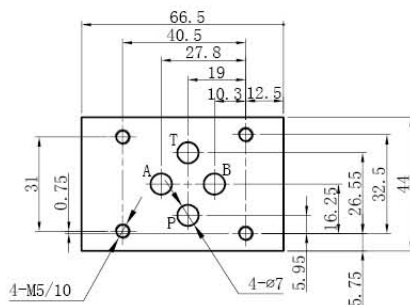


DWG6 Subplate Installation Dimensions





DWG6 Subplate Installation Dimensions



Installations are the same with
Z1DS6, Z2DS6, Z2FDS6, ZPB6, ZPR6

4	DWG	6	EL	E	60	/	O	DC24	N	Z5L	/	B0.8	V	*
---	-----	---	----	---	----	---	---	------	---	-----	---	------	---	---

3=3-way
4=4-way
Size 6

1.No code=Without manual override
2.Eb=With manual override
3.EL=With handle

Spool type

Series 60=60 Solenoid coils with thread connection

No code=With spring return; O=Without spring return
OF=Without spring return with detent

DC12=DC12V; DC24=DC24V; AC220=AC220V;
AC110=AC110V

For further details

No code=NBR seals for petroleum oils
V=FPM seals for phosphate ester

No code=Without orifice insert
B08=Orifice size 0.8mm
B10=Orifice size 1.0mm
B12=Orifice size 1.2mm

Z5L=Large quadrate plug with light

N=Without manual override
M=With manual override