

# WE10

## WE 10 SERIES SOLENOID OPERATED DIRECTIONAL CONTROL VALVES

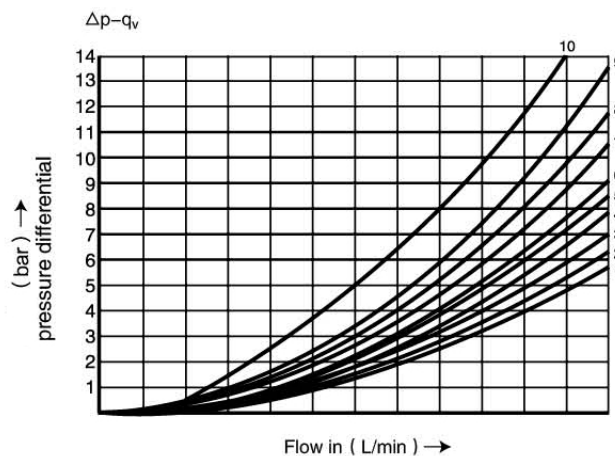


WE10series directional control valves are solenoid operated directional spool valves,these valves are used to the start ,stop and direct flow.

### ▶ Technical data

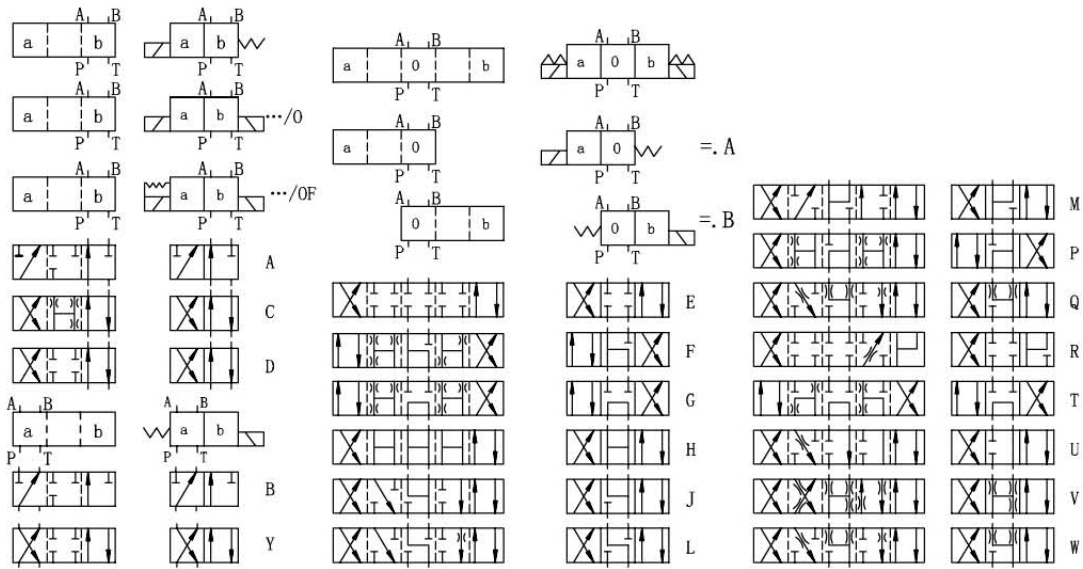
Size		10
Max.flow rate(L/min)		120
Operating pressure(MPa)		A、 B、 P oil port 31.5 T oil port 16
Weight(KGS)	One coil	4.6
	Two coils	6.4
Valve body ( Material ) Surface treatment		casting phosphating surface
Oil cleanliness		NAS1638 class 9 and ISO4406 class 20/18/15

### ▶ Characteristic curves ( measured with HLP46, Voil=40°C ± 5°C )

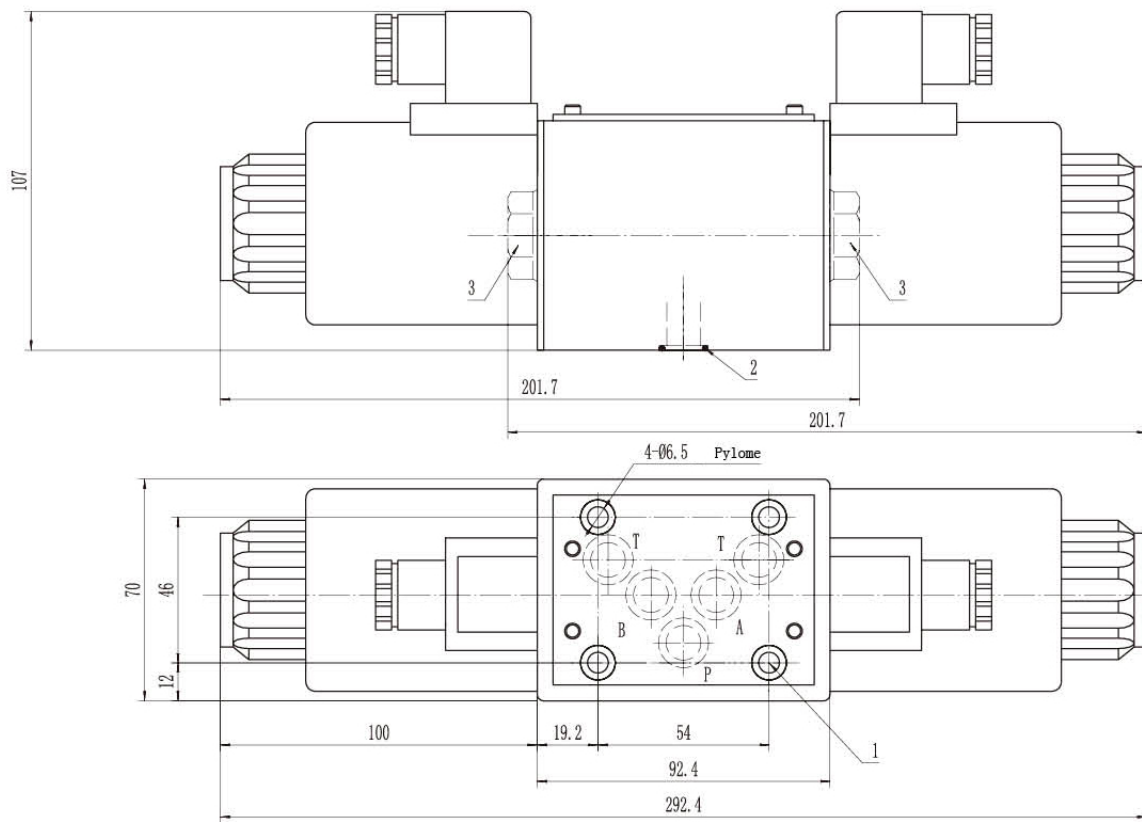


Spool symbol	Flow direction				
	P - A	P - B	A - T	B - T	
A; B	3	3	-	-	
C	3	3	4	5	
D;Y	5	5	6	6	
E	1	1	4	4	
F	2	3	7	4	
G	3	3	6	7	
H	1	1	6	7	
J	1	1	3	3	
L	2	2	3	5	
M	1	1	4	5	
P	4	2	5	7	
Q	1	2	1	3	
R	3	6	4	-	
T	3	3	6	7	
U,V	2	2	3	3	
W	2	2	4	5	
on-position	P-A	B-A	A-T	P-T	
R	-	9	-	-	
	P-A	P-B	B-T	A-T	P-T
F	4	-	-	9	9
9	-	5	8	-	10
G,T	-	-	-	-	9
H	-	-	-	-	3

Spool symbols



Subplate Installation Dimensions



- 1. Valve's set screw  
4 of M6 × 40 GB/T70.1-12.9  
Tightening torque Ma=15.5Nm.
- 2. O-ring φ 16 × 1.9
- 3. Plug screw for valves with one solenoid.